

Brightfield ringlight, S80-50



Brightfield ringlight, S40-55



Transmitted light stage

VisiLED Brightfield Lightheads

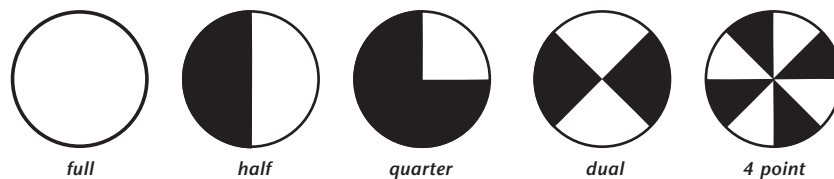
Illumination system specially developed for stereo microscopy and macroscopy applications.

5 Lightheads for brightfield illumination techniques:

- 3 Brightfield ringlights for high and low brightness requirements
- 1 Transmitted light stage for brightfield applications

Features

- Easily adaptable to microscope objectives by means of thumb screw and clamp ring
- Homogenous illumination
- Best white quality: typically 6,000 K
- Long operating life: typically 10,000 h by actively controlling the LED's temperature
- Segments controllable in different preset modes for optimum contrasting:

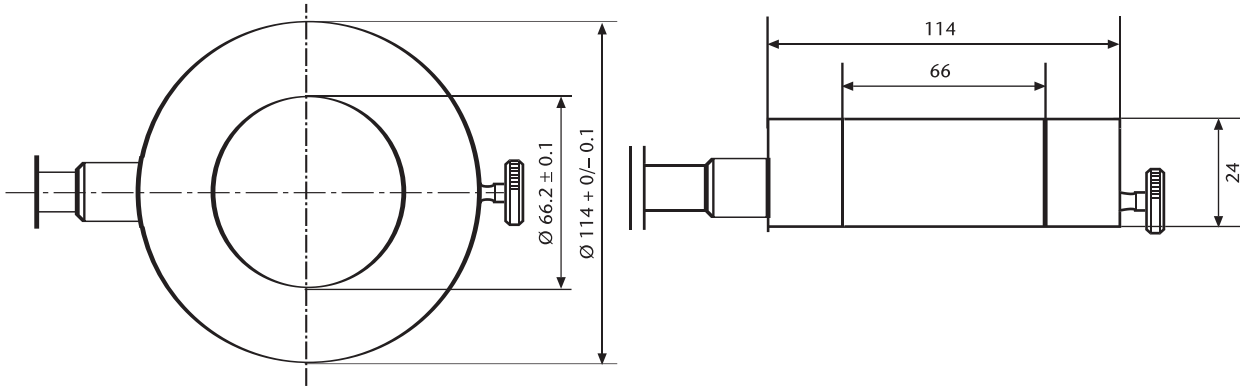


- Manufactured in the EU.

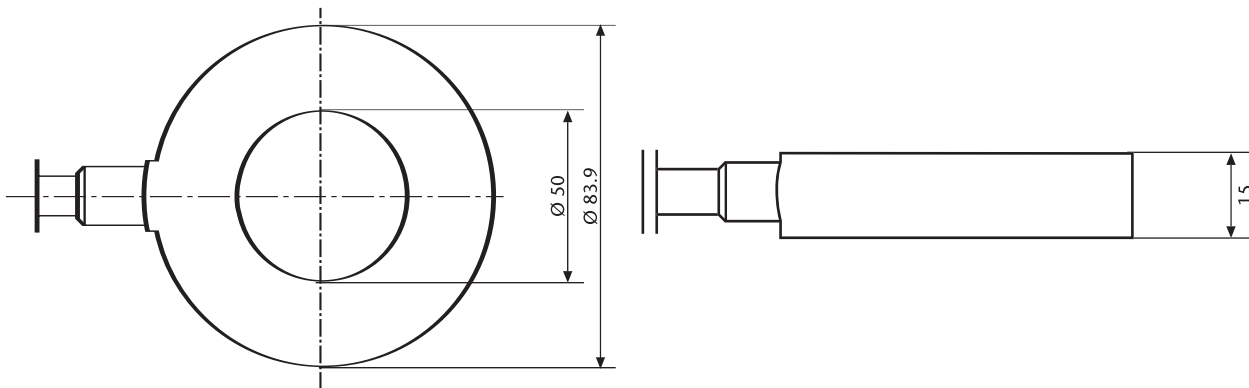
Ringlights and Accessories

Description	Part. No.	Working Distance (WD)	Light flux	Max. Illuminance	Inner Ø	Outer Ø
LED Brightfield ringlight "S40-55"	400 100	55-110 mm (2.17"-4.33")	50 lm	35 klx (75 mm) (2.95")	66 mm (2.60")	114 mm (4.49")
LED Brightfield ringlight "S80-25"	400 225	25-50 mm (0.98"-1.97")	100 lm	120 klx (30 mm) (1.18")	66 mm (2.60")	114 mm (4.49")
LED Brightfield ringlight "S80-55"	400 255	55-135 mm (2.17"-5.32")	100 lm	75 klx (70 mm) (2.76")	66 mm (2.60")	114 mm (4.49")
Transmitted light stage "TLS-BF"	400 416		85 lm	8000 cd/m ² (luminance in center)	active 50 mm (1.97")	84 mm (3.31")
Accessories	400 500	Combi-kit to combine one brightfield and the darkfield for mixed illumination.				

VisiLEDs MC Series



Brightfield ringlight



Transmitted light stage

Fiber Optics

SCHOTT North America, Inc.

62 Columbus Street
Auburn, NY 13021-3137

USA

Phone: +1315/255-2791

Fax: +1315/255-2695

E-mail: fiberoptics.auburn@us.schott.com

www.us.schott.com/fiberoptics

SCHOTT