



Gooseneck light guide



Gooseneck light guide bifurcated

Gooseneck Light Guides

Features:

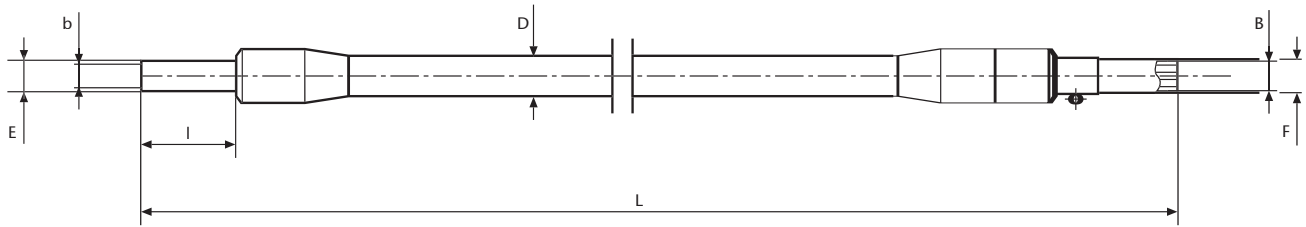
- Flex and stay light guides.
- Black laquered semi-rigid gooseneck tubing.
- Focussing optics with color filter option available.
- Manufactured in the EU.

Benefits:

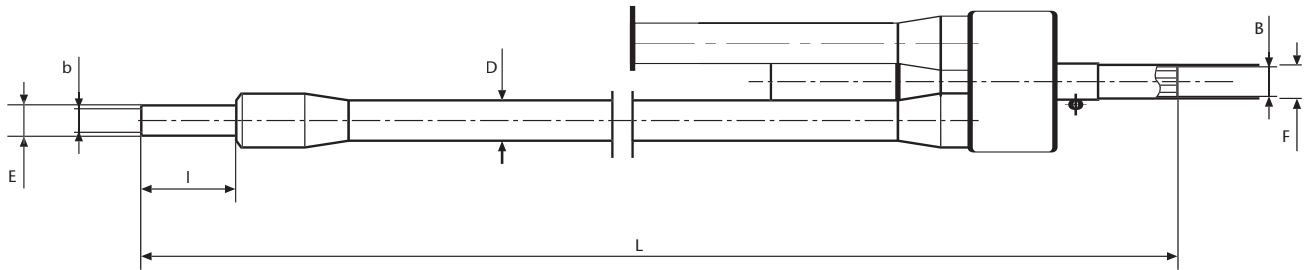
- Precise positioning offers complete control of light placement.
- Gooseneck branches positioned in opposite directions create near shadow-free illumination.
- Re-adjust with ease.
- Dual models illuminate workspace with a single light source.

Gooseneck Light Guides										
Cold light source	Part-No.	Type	Length	End tip Ø	End tip length	Active Ø/ branch	Active Common end Ø	Jacketing material	Outer Ø Jacketing	Light source adapter Ø
			L	E	I	b	B		D	F
KL 200	170 101	1 branch	500 mm 19.69 inch	6 mm 0.24 inch	20 mm 0.79 inch	3.5 mm 0.14 inch	3.5 mm 0.14 inch	Flex & Stay	11 mm 0.43 inch	9 mm 0.35 inch
	170 202	2 branch	500 mm 19.69 inch	6 mm 0.24 inch	20 mm 0.79 inch	3.5 mm 0.14 inch	5 mm 0.20 inch	Flex & Stay	11 mm 0.43 inch	9 mm 0.35 inch
KL 1500 LCD	154 101	1 branch	600 mm 23.62 inch	6 mm 0.24 inch	20 mm 0.79 inch	4.5 mm 0.18 inch	3.5 mm 0.14 inch	Flex & Stay	11 mm 0.43 inch	10 mm 0.39 inch
KL 2500 LCD	154 202	2 branch	600 mm 23.62 inch	6 mm 0.24 inch	20 mm 0.79 inch	4.5 mm 0.18 inch	5 mm 0.20 inch	Flex & Stay	11 mm 0.43 inch	10 mm 0.39 inch
	154 302	3 branch	600 mm 23.62 inch	6 mm 0.24 inch	20 mm 0.79 inch	4.5 mm 0.18 inch	7.8 mm 0.31 inch	Flex & Stay	11 mm 0.43 inch	10 mm 0.39 inch

Gooseneck Light Guides



1-branch



2- and 3-branch

Fiber Optics

SCHOTT North America, Inc.

62 Columbus Street

Auburn, NY 13021-3137

USA

Phone: +1315/255-2791

Fax: +1315/255-2695

E-mail: fiberoptics.auburn@us.schott.com

www.us.schott.com/fiberoptics

SCHOTT