



Flexible light guide 2 branch



Flexible light guide 3 branch

Flexible Light Guides

2- and 3-branch

Feature:

- Flexible light guides are available in different lengths and diameters.
- Articulating arm and different holders for positioning available.
- Focusing lenses, color filters and polarizers available.
- Manufactured in the EU.

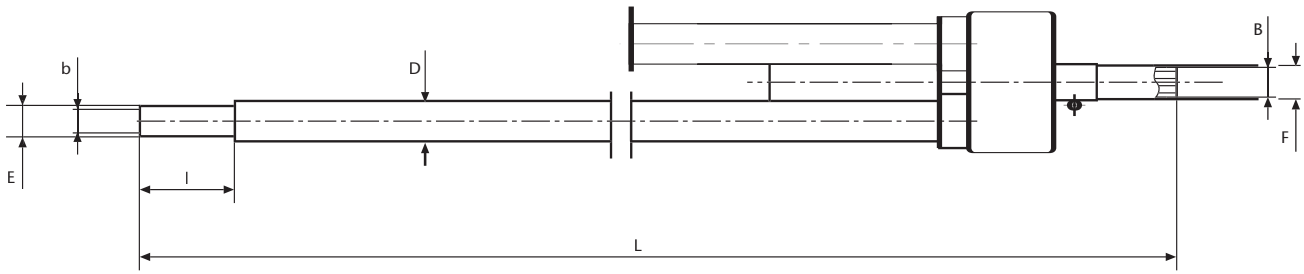
Benefit:

High flexibility for different illuminations as well as remote illumination.

Flexible Light Guides, 2- and 3-branch

Cold light source	Part-No.	Type	Length	End tip Ø	End tip length	Active Ø/ branch	Active Common end Ø	Jacketing material	Outer Ø Jacketing	Light source adapter Ø
			L	E	I	b	B		D	F
KL 200	171 202	2 branch	1000 mm 39.37 inch	6 mm 0.24 inch	20 mm 0.79 inch	4.0 mm 0.16 inch	5.5 mm 0.22 inch	Megolon	6.5 mm 0.26 inch	9 mm 0.35 inch
KL 1500 LCD	155 204	2 branch	1000 mm 39.37 inch	6 mm 0.24 inch	20 mm 0.79 inch	4.5 mm 0.18 inch	6.4 mm 0.25 inch	M-PVC	9.8 mm 0.39 inch	10 mm 0.39 inch
KL 2500 LCD	155 205		1600 mm 62.99 inch	6 mm 0.24 inch	20 mm 0.79 inch	4.5 mm 0.18 inch	6.4 mm 0.25 inch	M-PVC	9.8 mm 0.39 inch	10 mm 0.39 inch
	155 206	3 branch	1000 mm 39.37 inch	6 mm 0.24 inch	20 mm 0.79 inch	4.5 mm 0.18 inch	7.8 mm 0.31 inch	M-PVC	9.8 mm 0.39 inch	10 mm 0.39 inch

Flexible Light Guides



Fiber Optics

SCHOTT North America, Inc.

62 Columbus Street

Auburn, NY 13021-3137

USA

Phone: +1315/255-2791

Fax: +1315/255-2695

E-mail: fiberoptics.auburn@us.schott.com

www.us.schott.com/fiberoptics

SCHOTT