

1" (25) Dual Lightline, A08579



One leg of Dual or Quad 3" (76) Lightline with Cylindrical Lens

# 1", 2" & 3" Lightlines

Alternative to a fiber optic bundle for more precise illumination in Microscopy and Inspection applications.

### Features

- Small, uniform field of view.
- Narrow body design and offset position of the line on 1" (25) and 2" (51) bodies allows close positioning of the line against microscope slides (for darkfield affect).
- 3"(76)\* models are calibrated with DDL-bulb to  $\pm 8$  gray scale levels at a mean of 200 with a gamma setting of 1.0 to deliver optimum uniformity (see chart). Uniformity of 1"(25) and 2"(51) lines is better than  $\pm 8$  gray scales. Refer to section 25.02.01 for more information on uniformity of fiber optic products.
- Standard input ferrule fits ColdVision Series light sources. Can also be used with strobes.
- Rugged aluminum body and light source ferrule with black anodized finish. PVC covered metal tubing protects the fiber bundle.
- M6 threads are provided on the 1"(25) and 2"(51) lightline bodies for easy mounting. See drawing on back.
- Lightline holders and support products available in Support Apparatus for Lightlines section of the product catalog.
- Custom lengths, bundle exits, multiple combinations (dual, quad, etc.) and line widths can be designed for your unique requirements. In addition, combine lightlines with other fiber optic components in a single input to create unique lighting effects. Lead-time required.
- Cylindrical and apertured lenses are available as standard products for most lightline models. They can be custom made for all models. More details found in the Fiber Optic Accessory Section of the product catalog.
- Manufactured in the USA.

1", 2", & 3" Lightlines and Lenses					
Part No.	Line Dimensions	Input Active Fiber Dia.	Gray Scale Uniformity <sup>^</sup>	Part No. for Lens	
	Length x Width			Cylindrical	Apertured
<b>Single line configuration w/36" bundle length</b>					
A08588	1" x .070" (25 x 1.8)*	.30" (7.6)	< $\pm 8$	A08571	A08573
A08589	2" x .035" (51 x .89)	.30" (7.6)	< $\pm 8$	A08572	A08574
<b>Dual line configuration w/36" bundle length</b>					
A08579	1" x .070" (25 x 1.8)	.43" (10.9)	< $\pm 8$	A08571	A08573
A08583	2" x .035" (51 x .89)	.43" (10.9)	< $\pm 8$	A08572	A08574
A08580	3" x .018" (76 X .46)	.36" (9.1)	$\pm 8$	A08582	Custom
<b>Quad line configuration w/36" bundle length</b>					
A08584	3" x .018" (76 X .46)	.51" (13.0)	$\pm 8$	A08582	Custom

<sup>^</sup> Gamma setting of 1.0  
\* Dimensions in ( ) are in mm

# 1", 2" & 3" Lightlines

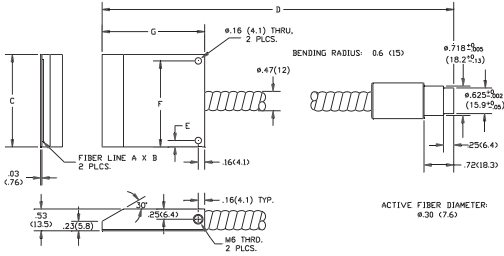
Dimensions in ( ) are in mm

**Input:** Black Anodized Aluminum

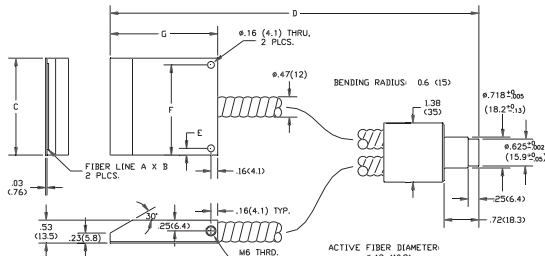
**Body:** Black Anodized Aluminum

**Sheathing:** PVC Covered Metal Tubing

**Warning:** This product is manufactured with glass fiber. Not for use in cable/hose carrier. Call SCHOTT to discuss moving cable/hose carrier applications.



**A08588 & A08589**  
Single Lightlines



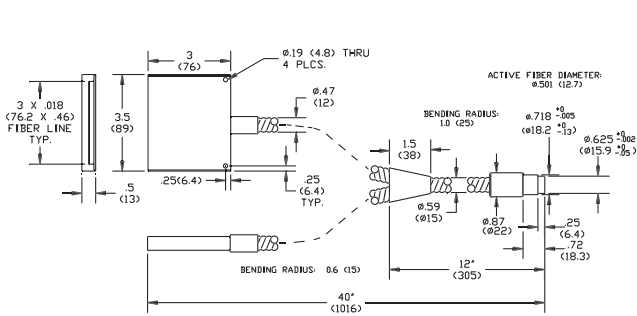
**A08579 & A08583**  
Dual Lightlines

## Matrix for A08588 & A08589 Lightlines

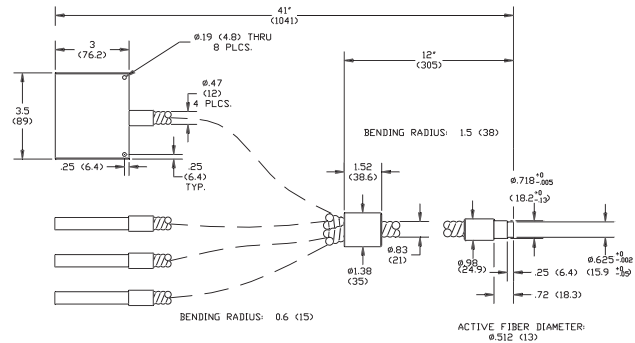
Part No.	A	B	C	D	E	F	G
<b>A08588</b>	1"(25)	.07"(1.8)	1.25"(31.8)	38"(965.2)	.16"(4.1)	1.1"(28)	2"(50.8)
<b>A08589</b>	2"(51)	.035"(.89)	2.25"(57.2)	38.5"(978)	.16"(4.1)	2.1"(53)	2.5"(63.5)

## Matrix for A08579 & A08583 Lightlines

Part No.	A	B	C	D	E	F	G
<b>A08579</b>	1"(25)	.07" (1.8)	1.25"(31.8)	38"(965.2)	.16"(4.1)	1.1"(28)	2"(50.8)
<b>A08583</b>	2"(51)	.035"(.89)	2.25"(57.2)	38.5"(978)	.16"(4.1)	2.1"(53)	2.5"(63.5)



**A08580**  
Dual Lightline



**A08584**  
Quad Lightline

Fiber Optics

**SCHOTT North America, Inc.**

62 Columbus Street

Auburn, NY 13021-3137

USA

Phone: +1315/255-2791

Fax: +1315/255-2695

E-mail: [fiberoptics.auburn@us.schott.com](mailto:fiberoptics.auburn@us.schott.com)

[www.us.schott.com/fiberoptics](http://www.us.schott.com/fiberoptics)

# SCHOTT