

SCHOTT® LLS - LED Light Source

Longer Life, Lower Energy Consumption



Hybrid solution pairs LEDs with Fiber Optics

The SCHOTT LLS offers several advantages over other types of fiber optic light sources used in machine vision applications, including:

- Long life-time (50,000 hours)
- Fits all COLDVision light guides
- Fast strobing capabilities (maximum 1 KHz pulse rate, maximum pulse width 1 msec, duty 1/10)
- Low power consumption (less than 15 watts)
- Immunity to vibration and shock
- Instantaneous switching
- Small footprint
- RoHS compliant



Part number A20950

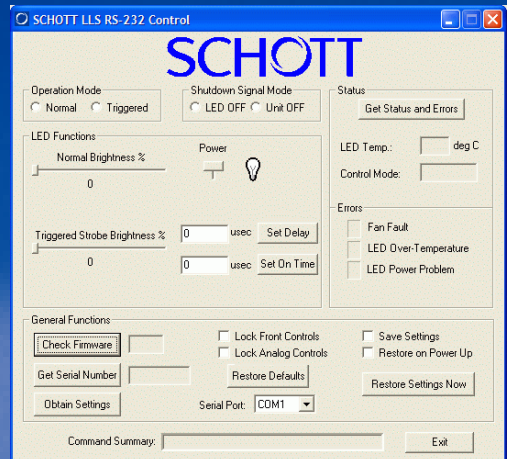
Characteristics:

Dimensions	Length 197mm (7.75 in) Width 129mm (5.08 in) Height 63mm (2.48 in)	
Weight	862 grams (1.9 lbs)	
Operating Temperature	-20° C (4 ° F) to 40° C (104° F)	
Part numbers / Colors	A20950	Red
	A20950.1	White
	A20950.2	Green
	A20950.3	Yellow
	A20950.4	Blue
	A20950.5	UV
Wavelength in nm (+/- bandwidth 20nm)	Red	625
	White	-
	Green	525
	Yellow	416
	Blue	470
	UV	390



The LLS offers users 4 different types of control interfaces - a continuous intensity control knob, USB 2.0, RS-232 or analog 0-5 Volt.

The auto-sensing inputs eliminate the need to switch manually between the modes. The unit also features a user control lock-out via the USB and RS-232 controls.



Screen shot of the RS-232 control

SCHOTT UK Ltd
Sales Office
Drummond Road
Stafford ST16 3EL
UK
Phone: 01785 223166
Fax: 01785 223522
info.uk@schott.com
www.schott.com/uk

For your local sales contact please visit
www.schott.com/fiberoptics/english/contact

SCHOTT
glass made of ideas